



APACHE CHARTERS

Montebello Islands

5 DAYS / 6 NIGHTS
LIVE ABOARD FISHING CHARTER



"EXPERIENCE EPIC FISHING ON THIS UNFORGETTABLE FISHING CHARTER"

\$3185pp + GST*

Max 12 PAX per trip

Come and fish the remote Montebello Islands situated 70NM from Onslow. We are the only Monties charter operator that departs from Onslow which means we spend less time travelling to the Monties and more time fishing!). Being a fully equipped live aboard charter vessel we can go where we want, when we want, so you get to fish in different areas of the region, including the offshore reefs as well as inside the island group.

Trip Includes:

- 6 nights on board accommodation
- 5 days of epic fishing
- All fishing tackle, bait & ice
- All WA Fishing Licences
- All main meals prepared by on board chef/cook
- Skipper & Deckhand

0409 968 371 | michelle@apachecharters.com.au | www.apachecharters.com.au

*2024 pricing. Subject to change.



APACHE CHARTERS

Departures & Dates



- Departs From: Beadon Creek Jetty, Onslow
- Season: July to November every year
- Every Sunday 11am to the following Saturday 8am



Fish Species

During the trip, we will be fishing for all WA iconic species including:

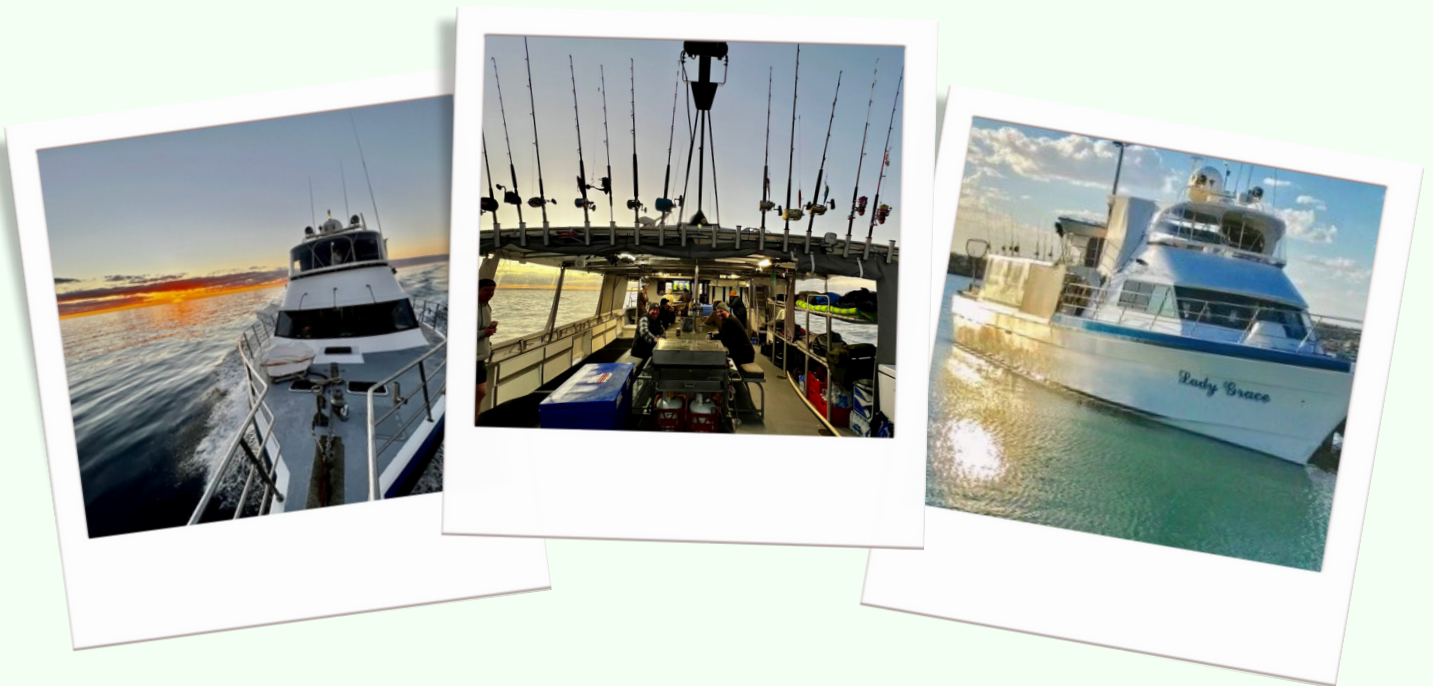
- **Red Emporer**
- **Sailfish**
- **Coral Trout**
- **Rankin Cod**
- **Spangled Emporer**
- **Spanish Mackerel**
- **and more!**



All fish kept must adhere to all Dept of Fisheries WA rules and regulations and maybe subject to change without notice. The itinerary may change subject to weather and fishing regulations.



APACHE CHARTERS



The Vessel - Lady Grace

The Lady Grace is a 70ft fully equipped live aboard vessel and has been specially fitted out for the best fishing and live aboard experience. The vessel is used 9 months of the year for 6 nights live aboard charters and 3 months for our corporate River Cruise and Rottneest Boat Charters.

Before every season, the Lady Grace is completely fitted out with the necessary changes to ensure the vessel is fully equipped for the specialised seasonal fishing equipment. Live Aboard mode, the 10m x 6-metre-wide back deck gets transformed by adding 2 x commercial 1t freezers, 12 seat main table is secured and the fishing gear is loaded. The vessel is licenced for 70 persons on our river trips, so to only have 12 passengers on our north west fishing trips means there is plenty of room for everyone to enjoy a week of bucket list fishing.

Accommodation

The Lady Grace offers dorm style accommodation (no individual private cabins available) with many options for sleeping arrangements:

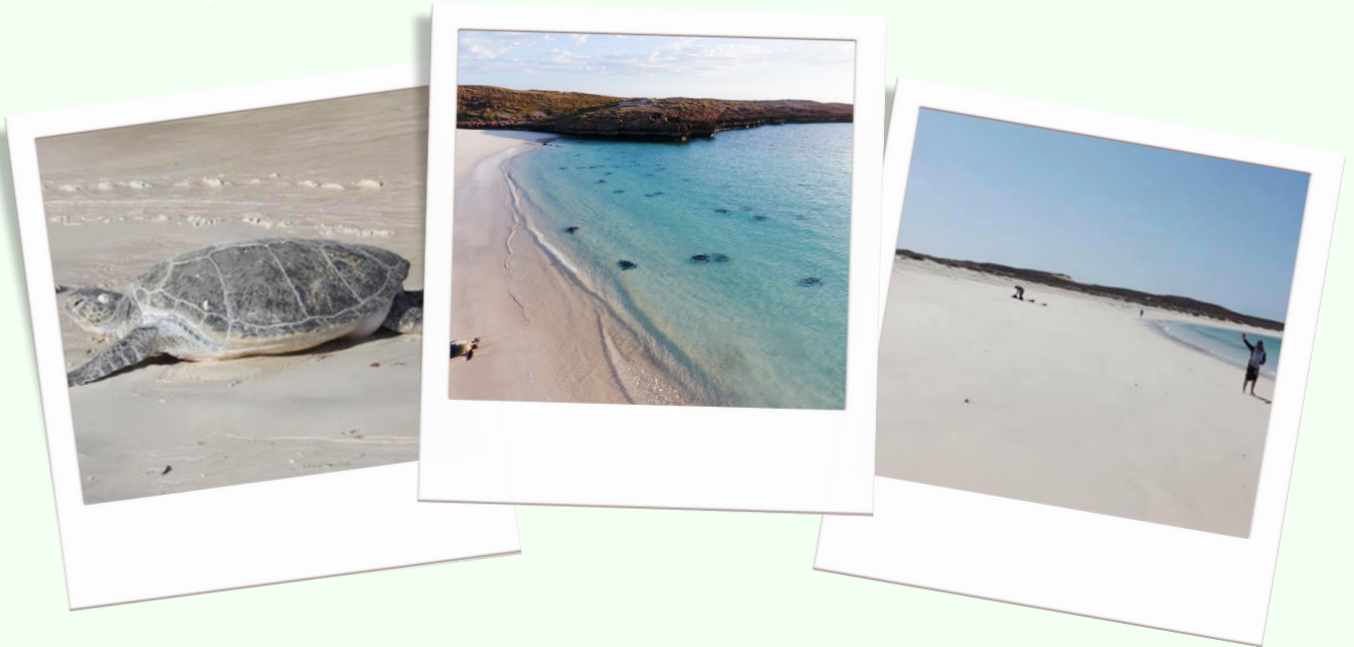
- 4 single bunk beds on main deck - covered
- 4 single bunk beds on enclosed flybridge
- 2 single top bunk beds in V berth with skylight for star gazing at night-time.
- 1 double or 2 singles in bottom of V Berth
- 5 single bunk beds in lower cabin
- 2 x double beds in bottom cabin

Vessel Features

- Airconditioning
- Lounge, galley, TV, DVD Player, s
- Satellite TV on back deck
- Two toilets
- 2 hot showers
- Huge deck area with BBQ and extra-large table with plenty of seating
- Freshwater maker
- 10m x 6m back deck
- 2 x 1T commercial freezers
- 3.5m tender
- Hiab



Fish Species



About The Montebello Islands

Montebello Islands are Western Australian coral islands in the Indian Ocean located off the northwest coast of Western Australia. The largest of the uninhabited group are Northwest, Trimouille, and Hermite.

On your Monties trip we will fish outside of the island group (subject to weather) and return back to safe anchorage each night within the islands.

The Monties has vast history with shipwrecks, abundant marine life and rich naval history and world class fishing that is remote and not accessed by many boats or people. The seafloor of Montebello Marine Park includes part of an ancient coastline (at the 125-metre depth contour) from a time when sea levels were lower than today. When tides are low, two coral reefs called Tryal Rocks emerge above the water. Both State and Commonwealth have marine parks at the Montebello Islands and Apache is one of the few tour operators offering fishing tours in the parks. (Marine parks are not sanctuary zones)

The marine park is important for the four turtle species (flatback, green, hawksbill and loggerhead) that breed on nearby Montebello Islands, as female turtles refuel and rest here between laying each clutch of eggs. Whale sharks and breeding seabirds forage here as well. On some of the tours it's possible to venture onto Alpha Island and Trimouille Islands to visit the bomb sites there. During your trip you may also get to see some of the numerous Humpback Whales that migrate in the area - all whale watching tours are complimentary on the trip. (seasonal)



TRIP ITINERARY

Sunday 11am

Arrive on vessel at 11am to load your gear and board vessel at Beadon Creek Jetty, Onslow on the Lady Grace. Once all have boarded and the safety brief is completed its a 3-4-hour steam for your first night at sea, anchored at Boodie Island. On the 3-4-hour steam, we will troll lures for Mackies and once we have anchored at Boodie, time to enjoy your evening meal and dip into the esky for your icy cold beers while sitting back in the remote areas off WA on the Lady Grace - feel free to wet a line tonight.

Day 1 - Monday

Up bright and early Monday morning and after a hearty cooked breakfast, we will fish around the island for trout then straight into the reef fishing along Barrow Island and arrive at the Montebello Islands late afternoon. After a full day fishing, we will anchor for the night at the Monties where our on-board cook will serve your dinner. Keep a look out for the WA local marine wildlife spot the dolphins or try and get the perfect photo of the whales cruising past. Enjoy an evening with your mates, retelling the day's events with an icy cold beer.

Day 2 - Tuesday

Up early for a big, cooked breakfast and off to work-fishing that is!! Get ready for another action-packed day of bottom fishing and working the top for pelagic action of Mackerel and Sailfish. Take a quick break for lunch, then it's back to fishing. Enjoy the evening, relaxing on the Lady Grace, the beers are cold, and your freshly caught fish has been filleted and snap frozen for you

Day 3 - Wednesday

Pretty much like yesterday, it's all about the fishing. Fishing out wide chasing Reds, Rankins, Trout and Spangled Emperor as well as a Spanish Mackerel or two. After another hard days fishing its back to a beautiful calm anchorage at the island group were all you have to do is sit back relax and have a few drinks while our onboard cook prepares the evening meal. Did you see the sea snakes and turtles today? Today could be the day we sports fish inside the island group using our 4.5m tender with 40hp electric trim and tilt outboard to get you to place fast. You can throw poppers for GT's and fish the shallows for a range of different species. - tender not available on all trips - weather dependant.

Day 4 - Thursday

Big Day again of fishing the remote wilderness of the Monties - don't forget to keep an eye out for the whales putting on a show. Fish our way back to the bottom of Barrow where we will anchor for the night.

Day 5 - Friday

Depart anchorage fish the bottom or troll for sailfish then lines up for a 4-hour run back to Onslow arriving around 5pm. Complimentary accommodation on board the Lady Grace tonight at the Onslow Jetty, however dinner is not supplied. Usually all the guests and crew, catch a cab into the town and enjoy a fabulous meal and drinks with a lot of storytelling at the local Onslow Beach Resort. Trophies are announced tonight.

Day 6 - Saturday

Your fish have been packed into your esky, now it's time for the short journey home. Disembarking is at 8am.



FAQs

What is included on the charter?

We supply all licences and quality fishing gear (Finor 650 reels and Shimano Tiagra trolling reels). We supply trolling lures for large pelagic species, bait and ice tackle but you will need to BYO jigs and soft plastics. You can bring as much tackle as you like or use ours.

All main meals are also included as well as morning/afternoon tea, tea/coffee, drinking water from tap, nibbles for happy hour and on board accommodation. Your Skipper, deckhand and cook are also included for the duration of the trip.

What is not included on the charter?

Alcohol, bottled water, soft drinks, and snacks such as lollies, crisps etc. No in water activities, no spear fishing, surfing or scuba diving.

What do I need to bring?

Please bring your own sleeping bag, pillow, single fitted sheet, toiletries, and towel. Please only use a soft bag to pack your clothes, large suitcases are not allowed. Pack clothes for all seasons. Pack light, we do however have a dryer and washing machine on board for clients to use. Yes, you can bring along any fishing gear you like. Please bring along your esky or Engel to load your fish at the end of the trip – just leave them in the car.

What type of food is provided?

We have a dedicated cook/chef on board to ensure you are well fed during your trip. Breakfast is varied but consists of a daily choice of bacon, eggs, sausage, beans, toasts & cereals. Lunch includes cold meat & salad wraps, cooked cold chicken & salad and sandwiches. Dinners vary but consist mainly of fresh fish cooked various ways. Scotch fillet steak is on the dinner menu for one night, plus hot chips, vegetables and potato dishes. Dessert is also served nightly. Nothing beats fresh Coral Trout, Rankin Cods, Emperors, Cods and Mackerel on the dinner table every night. Menus subject to change.

What drinks/snacks should I bring?

Please BYO any alcohol as we do not supply any at all. Please try and choose cans instead of glass wherever possible. Drinking water on board is supplied by the on board desal system. Please bring along your own bottled water if you would prefer along with any soft drinks you require. Wine glasses and an assortment of stubby holders are on board if needed. Bring along any personal snacks like lollies/crisps as we don't supply these - extra snacks are not needed however as the chef always over caters. There are limited shops at Onslow.

What time can I board the vessel?

The arrival time is 11am, please do not board the vessel any earlier as our crew need time to prepare, store up and clean the Lady Grace ready for your arrival. We appreciate our clients wanting to come earlier and say hello and drop gear off, but please refrain as it only holds up our operational procedures and we would prefer to have everything ready so we can board and load your gear all together.



FAQs (continued)

Do you provide Car parking at Onslow?

We park our staff cars at the Onslow Jetty and never had any security issues. However, if you choose, we can help you drop your car off at the local transport yard for the safe locked up parking for the week, there is a minimal cost. Just let us know a few days before your trip if we need to arrange this for you. One of our crew will give you a lift back to the jetty.

What is the mobile coverage like at the Montebellos?

Telstra has probably the best coverage for mobile reception, but it is unreliable. We do fish in remote areas and most of the charter will be without phone reception. Better time of day is late in the afternoon or evening when the boat is back in the island group and on anchor. Texting seems to work best. However, in case of emergencies the vessel is equipped with a satellite phone 0011 870776418064. Or call 0409968371 during office hours and we can call the sat phone for you. The vessels location is also monitored by onshore operations.

Fish Handling and transportation of fish

All fish is filleted daily by our crew and is then snap frozen in our commercial on-board freezers in trays of each species. At the end of the trip, all fillets are then packed into your eskies and shared out evenly amongst passengers per species. It's not possible to take home the exact fish that you caught.

Unaccompanied recreationally caught fish cannot be transported by commercial couriers. You must accompany your fish if transporting by land, sea or air. This includes all parts of the fish. At the end of your trip, you must take your fish with you, we cannot store it for you due to fishing possession limits. Labelling of each fillet or esky will be as per Fisheries guidelines at the time of departure and will be carried out on board by Apache Crew. Let the crew know if you are sharing an esky prior to the start of the fish handling procedures.

Eskies

Please bring your own eskies to take home your fish. Due to stock shortages and expensive freight costs it's sometimes not possible to obtain foam eskies in Onslow. Please make sure you have your eskies prior to arriving in Onslow (all fishing regs apply).

Do you Cryovac?

No, we don't offer a cryovac service. All fillets are frozen with skin on and placed in separate fish bags. On whole boat charters you can bring along your own machine if you would prefer and Cryovac ALL the fillets - this is not possible on mixed group charters.

Are there any age restrictions?

On mixed group bookings, we only accept bookings for 18 years and older due to the physical nature of the fishing trip. On private bookings, we can accept any age as we can customise the itinerary to suit your requirements although we would not recommend very young children on the 6-night tours. If you're unsure, please just ask us. The Montebello trips are the most family friendly.



FAQs (continued)

What info is on the Manifest?

Name, Mobile, Email, Age, Post Code, Emergency Contact Name, Any Food Allergies, Any Medical Conditions, are you deemed fit for the tour? Agree Y/N to Terms and Conditions and any Covid Regs.

Can we Spearfish or Scuba Dive?

Our speciality is fishing and that's what we are good at. As we don't employ a dive master, we don't offer scuba diving activities and have removed any spear fishing activities from our itinerary.

What's the best way to travel to Onslow?

Driving from Perth to Onslow with overnighing in Carnarvon has proven to be the best way to travel as flights are hard to come by. Qantas offers flights to Exmouth and Karratha then you need to either hire a bus transfer for car hire for the remaining 3-4-hour leg to Onslow. Virgin does fly into Onslow - seats and frequency is limited

Can we change the itinerary to more eco-friendly activities?

Yes, we are happy to change the itinerary to suit your personal requirements only if the booking is for the whole boat and not joining a mixed group. Fishing is what Apache is all about, however if you would like to incorporate bird watching, wildlife viewing, visiting the coral patches, snorkelling, swimming or visiting the sea lions let us know when booking and we can revise the itinerary to suit.



APACHE CHARTERS

Booking Procedure

To book, a \$500 deposit per person is required. Bookings are not secured until all deposits are received – the booking will only be valid for 7 days. Receipt of a deposit or payment from each individual is considered as acknowledgement and consent to the terms and conditions supplied by Apache Charters.

1. Contact us to arrange your booking and confirm details
2. You will receive an email via our NetBookings booking system with all charter booking information, booking reference number, deposit details, manifest form and terms and conditions
3. Complete manifest and email back to michelle@apachecharters.com.au. Read all terms and conditions. We also recommend taking out travel insurance.
4. Pay your \$500 per person deposit within 7 days of booking. Failure to remit your deposit within 7 days voids your booking. If you need more time, let us know.
5. Receipts will be emailed to client upon receiving payments via NetBookings – accounts are checked twice a week and once payment is confirmed, your booking is secured
6. Sixty (60) days before your trip - final payment is due. Use your booking number as a reference when paying.
7. Five days before your trip, final email confirmation is sent. Let the office know if any questions.

Fuel Surcharge

Please note that future bookings will be subject to a fuel surcharge of minimum 3% for all 2023 bookings and beyond.

PAYMENT DETAILS

Please use your booking reference and surname when making online payments.

Westpac

Account Name: Apache Charters

BSB 036 224

Account Number 385469

Over the counter bank payments

If you are going into the bank for over-the-counter payments, please let the office know as the banks have no way of adding a reference number to your transaction.

Credit Card Payments

We accept Visa and Mastercard. Please call 0409 968 371 to arrange over the phone.

1.25% surcharge for Visa & MasterCard. We do not accept Amex.

Why can't I book online?

We don't use booking agents as we would prefer to discuss with you which fishing tour would be most suited to your bucket list fishing trip expectations. This saves you about \$200 pp by booking direct and not paying online booking commissions.



Terms & Conditions

Refunds

Deposits/Payments are not refundable at any stage for any reason for all live aboard charter bookings. We suggest you take out travel insurance when booking your fishing holiday. It is up to each guest to ensure that they comply with all COVID regulations.

INDIVIDUAL BOOKINGS – DEPOSITS and TERMS & CONDITIONS

- Immediate \$500 per person non-refundable deposit when making booking.
- All bookings are not secured until the full deposit is paid.
- Balance payable 60 days prior to charter date.
- Failure to remit deposit payment will render your booking cancelled and clients will need to rebook.

WHOLE BOAT CHARTERS MINIMUM 12 PERSONS – DEPOSITS and TERMS & CONDITIONS

Whole boat bookings which require a minimum of 12 persons to book, require a \$6000 deposit which is \$500 each for 12 persons. Bookings are only confirmed once the full deposit has been paid.

Whole boat charters have 7 days to remit full deposit. Failure to remit deposit within 7 days will render your booking cancelled and clients will need to rebook. However, if you need extra time, please call the office 0409 968 371 as we may be able to offer you an extension.

Full payment is required 60 days prior to charter.

Changes and cancellations

Apache Charters reserves the right to cancel any charter depending on weather conditions, breakdowns, or any unforeseen circumstance. No refunds. All charters will be rescheduled within a 12-month time frame.

If in the event you book for a private whole boat charter and 90 days prior to your charter date, one or more of your groups cancel, the remaining group must still pay the 12-person rate.

Up to 89 days before your charter, one or more of your groups cancel, please contact Apache Charters 0409968371 to see if Apache can book other people on your charter so you are not liable for the 12-person minimum payment. We will do our best to assist wherever possible. Apache will charge an administration fee of \$250.00 to cover additional admin and advertising costs for each change.

For any internal changes to the whole boat booking, deposits will only be refunded if organiser or guest can find a suitable replacement and once the replacement has paid their deposit, then the original deposit will be refunded to the original persons booking. However, if this not possible for Apache to replace your numbers, your original booking still stands and your full payment for all 12 spots remains. No refunds on any deposits or payments. We suggest you all take out travel insurance.

Each charter organiser will be responsible for ensuring that each member of his/ her party receives a copy of the terms and conditions and itinerary information.



Terms & Conditions

Apache Charters conducts charters in remote areas. The nature of these charters in some circumstances mean passengers may face some physical discomfort and even danger. In the cases Apache Charters expects all passengers to understand and appreciate the risks involved and be prepared to accept those risks. Naturally, Apache Charters undertake to provide every possible precaution and to take all due care, but ultimately all responsibility for illness, accident or death, or any property damage or loss, lies with the passenger. Apache Charters is unable to accept any responsibility for any action on behalf of any other carrier that may result in passengers failing to meet the conditions set down in booking conditions

Fishing Rules and Regulations

Regs are as per the Western Australian Department of Fisheries and may be subject to change without notice.

Fishing Licences

All customers on board our licenced fishing charter boat the Lady Grace are exempt from the new Recreational Fishing Boat Licences (RFBL). As we have already paid for your licence, which is included in our annual Fishing Licence to the Department of Fisheries.

Level of Fitness

You must ensure that you are medically and physically fit for the fishing trip. The charters are carried out in remote areas and require a certain level of fitness, health and mobility. The charters may not be suitable for people with pre-existing medical conditions such as back issues etc. When booking and before you have remitted any payment, please advise us of any medical or physical condition(s) that may require medical attention, medication, or special treatment during your tour. If a guest has a condition that we decide may significantly affect the enjoyment, health or safety of themselves or any other person on board, we can refuse or cancel a booking. If any guest is not sure about their fitness for travel, please seek medical advice prior to booking. Should the skipper or Apache staff deem a passenger unfit to travel for safety reasons, we reserve the right to decline boarding and no refunds will be given. Sleep machines are quite common on the trips, so if you need to bring yours, just let us know when booking.

Seasickness

We do not provide seasickness tablets on board the vessel. We do recommend that clients bring along their own tablets and take them according to the medication directions. We cannot be responsible for seasickness issues and cannot refund if you experience any seasickness.

Personal Effects

Apache Charters is not liable for lost or damaged baggage and personal effects. Please ensure you take out comprehensive travel insurance including cancellation cover and medical cover.

DO NOT ARRIVE INTOXICATED

Please do NOT arrive at the vessel for boarding intoxicated. Due to health and safety requirements for our clients and crew you will not be permitted to board the vessel and will forfeit all monies paid to Apache Charters.